



Prepared by Gene Summy
August 1, 2013



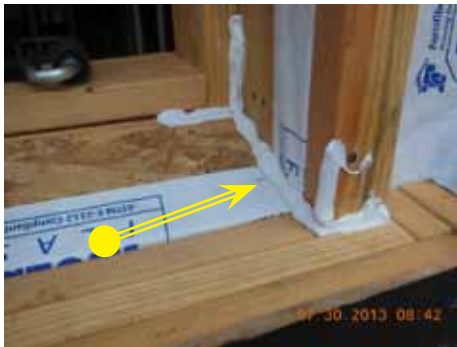
1. Exterior recessed framing condition



2. Exterior recessed framing condition



3. Lower bib applied



4. Sealant applied as shown



5. GS 106 A flashing corner set in place



6. Sealant applied on top of GS 106 A flashing corner in preparation for GS 100 B corner



7. GS 100 B flashing corner set in place



8. Trim GS 100 B corner @ framing sill



9. Begin to apply Protecto Wrap SAF flashing; layered to overlap minimum of 4 inches.



10. Protecto Wrap layered on to framing sill as shown



11. End dams cut and applied as shown. Use a 12" x 9" rectangular piece of Protecto Wrap as the end dam



Prepared by Gene Summy
August 1, 2013



12. Apply Protecto wrap on to the framing sill and 6 inches up each trimmer.



13. Apply Protecto wrap on to the framing sill and 6 inches up each trimmer.



14. Apply lower course of window flashing (Future Flash)



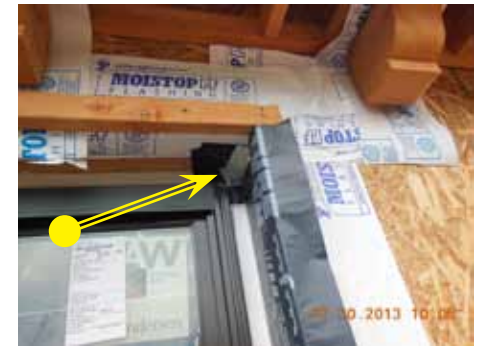
15. Apply side layers of window flashing (Future Flash) and set the window in place.



16. Apply sealant on top of nailing fin and butter flat



17. Apply sealant on top of nailing fin and butter flat



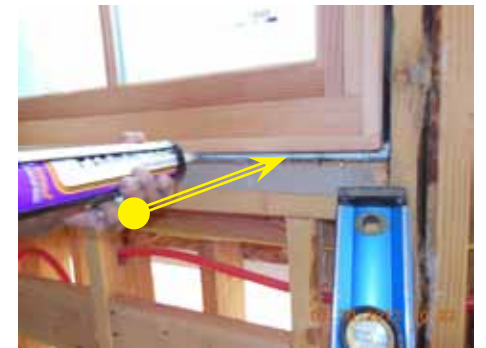
18. Apply top GS 100 B flashing corners into the wet sealant.



19 & 20. Apply top GS 106 A flashing corners into the wet sealant as shown. Wet sealant at top corners (not shown).



21. Apply top window flashing (Future Flash)



22. Apply sealant across the inside of the window sill and 8 inches up each side to terminate the inside of the membrane window pan.